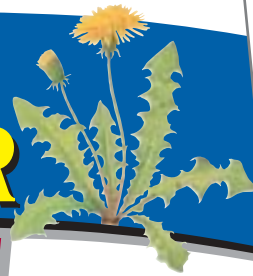


Preen®

LAWN WEED KILLER



KILLS TO THE ROOT
Ready to Spray



Keep out
of reach
of children
CAUTION

See back panel
for additional
Precautionary
Statements.

NET 32 FL OZ
(1 QT) 946mL

Kills weeds NOT lawns

- *Kills dandelions, clover, even poison ivy*
- *Fast acting formula, rainproof in hours*

ACTIVE INGREDIENTS:
Dimethylamine salt of 2,4-dichlorophenoxyacetic acid.....5.56%
Dimethylamine salt of (+)-(R)-2-(2-methyl-4-chlorophenoxy)
propionic acid.....1.34%
Dimethylamine salt of dicamba: 3,6-dichloro-o-anisic acid....0.62%
INERT INGREDIENTS:.....92.48%
TOTAL.....100.00%

THIS PRODUCT CONTAINS:
4.62% 2,4-dichlorophenoxyacetic acid equivalent
1.11% (+)-(R)-2-(2-methyl-4-chlorophenoxy)
propionic acid equivalent
0.51% 3,6-dichloro-o-anisic acid equivalent
Isomer Specific by AOAC Methods.
Contains the single isomer form of Mecoprop-p.

SPECIMEN LABEL

SPECIMEN LABEL

Preen®

LAWN WEED KILLER



KILLS TO THE ROOT

Ready to Spray

Keep out of reach of children
CAUTION

See back panel for additional Precautionary Statements.

NET 32 FL OZ (1 QT) 946mL

Kills weeds NOT lawns

- *Kills dandelions, clover, even poison ivy*
- *Fast acting formula, rainproof in hours*

ACTIVE INGREDIENTS:

Dimethylamine salt of 2,4-dichlorophenoxyacetic acid.....	5.56%
Dimethylamine salt of (+)-(R)-2-(2-methyl-4-chlorophenoxy)propionic acid.....	1.34%
Dimethylamine salt of dicamba: 3,6-dichloro-o-anisic acid.....	0.62%
INERT INGREDIENTS:	92.48%
TOTAL	100.00%

THIS PRODUCT CONTAINS:

4.62% 2,4-dichlorophenoxyacetic acid equivalent
 1.11% (+)-(R)-2-(2-methyl-4-chlorophenoxy)propionic acid equivalent
 0.51% 3,6-dichloro-o-anisic acid equivalent
 Isomer Specific by AOAC Methods.
 Contains the single isomer form of Mecoprop-p.



This page is intentionally left blank.

**STOP - Read the entire label first.
Observe all precautions and follow directions carefully.**



Directions for Use

It is a violation of Federal law to use this product in a manner inconsistent with its labeling.

Do not allow people (other than applicator) or pets on treatment area during application. Do not enter treatment area until spray has dried or dust has settled.

Preen® Lawn Weed Killer is designed for use through this sprayer for controlling of broadleaf weeds in bahiagrass, bermudagrass, Kentucky bluegrass, fescue, perennial ryegrass, zoysiagrass, centipedegrass, and St. Augustinegrass lawns.

IMPORTANT: Do not allow drift onto vegetables, flowers, ornamental plants, shrubs, trees and other desirable plants since injury may result. Do not pour spray solutions near these plants. Do not spray roots of trees and ornamentals. Do not exceed specified dosages for any area; be particularly careful within dripline of tree and other ornamental species.

Directions for Use on Lawns

For control of dandelion, chickweed, plantain, clover, and other listed weeds, apply when weeds are actively growing. Spray weeds such as wild garlic and wild onion when they appear in late fall and again in early spring.

PREEN GUARANTEE

Lebanon Seaboard Corporation guarantees you will be satisfied with the performance of this product when used as directed, or your money back. If not satisfied, describe the nature of your problem, and send with proof of purchase to:

**LEBANON SEABOARD CORPORATION
1600 EAST CUMBERLAND STREET
LEBANON, PA 17042**

1-800-233-1067
www.preen.com



Preen® is a registered trademark of Lebanon Seaboard Corporation. 9/04

PROOF OF PURCHASE

SPECIMEN LABEL

Water lawn thoroughly 1 to 2 days before application. Do not water for 48 hours after application. Do not mow for one week before treating.

Spray entire lawn, wetting weeds and lawn grasses, do not saturate. Spray when air is calm to avoid spray drift that might injure desirable ornamental plants. Adjust water pressure at faucet to give coarse spray which is less likely to drift. Do not apply when temperatures are expected to exceed 85°F within 24 hours following application.

Temporary injury may occur on bentgrass, bermudagrass, and red fescue lawn grasses. Do not apply to carpetgrass, dichondra, Lippia lawns, and lawns where desirable clovers are present.

Do not apply this product to improved varieties of 'Floritam' St. Augustinegrass in Florida.

Newly seeded lawns may be treated after they have been mowed at least three times.

The maximum application rate to turf is 2.0 pounds 2,4-D acid equivalent per acre per application per site. The maximum number of broadcast applications per treatment site is 2 per year.

How to Use

Make sure water control knob on hose sprayer is in the "OFF" position. Hold by handle and shake vigorously, turning bottle as you shake. Attach hose to spray nozzle. Bend safety tab back and break off. Turn control to "WATER" position. Slowly turn on water supply to moderate rate of flow. Point nozzle toward spray area, turn control knob to "ON". Product will automatically mix with the water. Slowly sweep the area to be treated. To stop spraying turn control valve to the "OFF" position. Turn off water at faucet. To relieve pressure, turn control valve to the "WATER" position pointing sprayer away from self. Remove from hose.

One quart of Preen® Lawn Weed Killer will cover 5,000 square feet of lawn for bahiagrass, Kentucky bluegrass, bermudagrass, fescue, perennial ryegrass, and zoysiagrass.

For centipedegrass and St. Augustinegrass, one quart of Preen® Lawn Weed Killer will treat 8,000 square feet of lawn.

Weeds Controlled

Preen® Lawn Weed Killer is effective on hard to control broadleaf weed species such as dandelion, white clover, sheep sorrel and spurge. In addition, it controls susceptible weeds including chickweed, henbit, and plantain. A partial list is presented as follows:

Sensitive weeds:

Bedstraw	Chickweed	Knotweed	Purslane
Black medic	Clover	Lambsquarters	Ragweed
Buckhorn	Dandelion	Peppergrass	Shepherdspurse
		Plantain	Wild lettuce

Hard-to-kill weeds:

Chickory	Mallow	Poison oak	Wild carrot
Dock	Morningglory	Sheep sorrel	Wild onion
Ground ivy	Oxalis	Speedwell	Yarrow
Healall	Pigweed	Spurge	and many other
Lespedeza	Poison ivy	Virginia button-weed	broadleaf weeds

Warranty

The Distributor warrants that this product conforms to its chemical description and is reasonably fit for the purpose stated on the label when used in accordance with directions under normal conditions of use, but neither this warranty nor any other warranty of merchantability or fitness for a particular purpose, expressed or implied, extends to the use of this product contrary to label instructions, or under abnormal conditions, or under conditions not reasonably foreseeable to Distributor, and Buyer assumes the risk of any such use.

94-63706

SPECIMEN LABEL

SPECIMEN LABEL

OPEN FOR COMPLETE DIRECTIONS FOR USE.

PRESS TO RESEAL

PRECAUTIONARY STATEMENTS

Hazards to Humans and Domestic Animals

CAUTION Harmful if swallowed. Avoid contact with eyes, skin or clothing. Wear face shield or goggles when mixing, loading or applying this product. When using this product, wear long-sleeved shirt, long pants, socks, shoes and rubber gloves.

After using this product, rinse gloves before removing, remove clothing and launder separately before reuse, and promptly and thoroughly wash hands and exposed skin with soap and water. Remove saturated clothing as soon as possible and shower.

FIRST AID

IF INHALED:	<ul style="list-style-type: none">• Move person to fresh air.• If person is not breathing, call 911 or an ambulance, then give artificial respiration, preferably mouth-to-mouth, if possible.• Call a poison control center or doctor for further treatment advice.
IF ON SKIN OR CLOTHING:	<ul style="list-style-type: none">• Take off contaminated clothing.• Rinse skin immediately with plenty of water for 15-20 minutes.• Call a poison control center or doctor for treatment advice.
IF IN EYES:	<ul style="list-style-type: none">• Hold eye open and rinse slowly and gently with water for 15-20 minutes.• Remove contact lenses, if present, after the first 5 minutes, then continue rinsing eye.• Call a poison control center or doctor for treatment advice.
IF SWALLOWED:	<ul style="list-style-type: none">• Call a poison control center or doctor immediately for treatment advice.• Have person sip a glass of water if able to swallow.• Do not induce vomiting unless told to do so by a poison control center or doctor.• Do not give anything by mouth to an unconscious person.

Have the product container or label with you when calling a poison control center or doctor or going for treatment. You may also call toll-free (888) 208-1368 for emergency medical treatment information.

Environmental Hazards

This product is toxic to aquatic invertebrates. Drift or runoff may adversely affect aquatic invertebrates and nontarget plants. Do not apply directly to water. Do not contaminate water when disposing of equipment washwater. When cleaning equipment, do not pour the washwater on the ground; spray or drain over a large area away from wells and other water sources.

Most cases of groundwater contamination involving phenoxy herbicides such as 2,4-D and MCP-p have been associated with mixing/loading and disposal sites. Caution should be exercised when handling 2,4-D and MCP-p pesticides at such sites to prevent contamination of groundwater supplies. Use of closed systems for mixing and transferring this pesticide will reduce the probability of spills. Placement of the mixing/loading equipment on an impervious pad to contain spills will help prevent groundwater contamination.

Storage and Disposal

Storage: Keep from freezing. Store in original container in a locked storage area inaccessible to children and pets. Do not store near food or feedstuffs.

Disposal: If empty: Do not reuse this container. Place in trash or offer for recycling if available. **If partly filled:** Call your local solid waste agency or toll free number (1-800-CLEANUP) for disposal instructions. Never place unused product down any indoor or outdoor drain.

Distributed by
LEBANON SEABOARD CORPORATION
1600 EAST CUMBERLAND STREET
LEBANON, PA 17042

1-800-233-1067
www.preen.com

EPA Reg. No. 2217-540-961
EPA Est. No. 47427-OH-002

Base Label

PRECAUTIONARY STATEMENTS

Hazards to Humans and Domestic Animals

CAUTION Harmful if swallowed. Avoid contact with eyes, skin or clothing. Wear face shield or goggles when mixing, loading or applying this product. When using this product, wear long-sleeved shirt, long pants, socks, shoes and rubber gloves.

After using this product, rinse gloves before removing, remove clothing and launder separately before reuse, and promptly and thoroughly wash hands and exposed skin with soap and water. Remove saturated clothing as soon as possible and shower.

FIRST AID

IF INHALED:	<ul style="list-style-type: none">• Move person to fresh air.• If person is not breathing, call 911 or an ambulance, then give artificial respiration, preferably mouth-to-mouth, if possible.• Call a poison control center or doctor for further treatment advice.
IF ON SKIN OR CLOTHING:	<ul style="list-style-type: none">• Take off contaminated clothing.• Rinse skin immediately with plenty of water for 15-20 minutes.• Call a poison control center or doctor for treatment advice.
IF IN EYES:	<ul style="list-style-type: none">• Hold eye open and rinse slowly and gently with water for 15-20 minutes.• Remove contact lenses, if present, after the first 5 minutes, then continue rinsing eye.• Call a poison control center or doctor for treatment advice.
IF SWALLOWED:	<ul style="list-style-type: none">• Call a poison control center or doctor immediately for treatment advice.• Have person sip a glass of water if able to swallow.• Do not induce vomiting unless told to do so by a poison control center or doctor.• Do not give anything by mouth to an unconscious person.

Have the product container or label with you when calling a poison control center or doctor or going for treatment. You may also call toll-free (888) 208-1368 for emergency medical treatment information.

Environmental Hazards

This product is toxic to aquatic invertebrates. Drift or runoff may adversely affect aquatic invertebrates and nontarget plants. Do not apply directly to water. Do not contaminate water when disposing of equipment washwater. When cleaning equipment, do not pour the washwater on the ground; spray or drain over a large area away from wells and other water sources.

Most cases of groundwater contamination involving phenoxy herbicides such as 2,4-D and MCP-p have been associated with mixing/loading and disposal sites. Caution should be exercised when handling 2,4-D and MCP-p pesticides at such sites to prevent contamination of groundwater supplies. Use of closed systems for mixing and transferring this pesticide will reduce the probability of spills. Placement of the mixing/loading equipment on an impervious pad to contain spills will help prevent groundwater contamination.

Storage and Disposal

Storage: Keep from freezing. Store in original container in a locked storage area inaccessible to children and pets. Do not store near food or feedstuffs.

Disposal: If empty: Do not reuse this container. Place in trash or offer for recycling if available.

If partly filled: Call your local solid waste agency or toll free number (1-800-CLEANUP) for disposal instructions. Never place unused product down any indoor or outdoor drain.

Distributed by
LEBANON SEABOARD CORPORATION
1600 EAST CUMBERLAND STREET
LEBANON, PA 17042

1-800-233-1067
www.preen.com

EPA Reg. No. 2217-540-961
EPA Est. No. 47427-OH-002

OPEN FOR COMPLETE DIRECTIONS FOR USE.

PRESS TO RESEAL